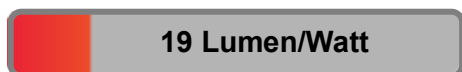


Light efficiency:



Light quality:



Color temperature:



Output: 7267 lm

Peak: 53889192

Power: 375 W

PF: n/a



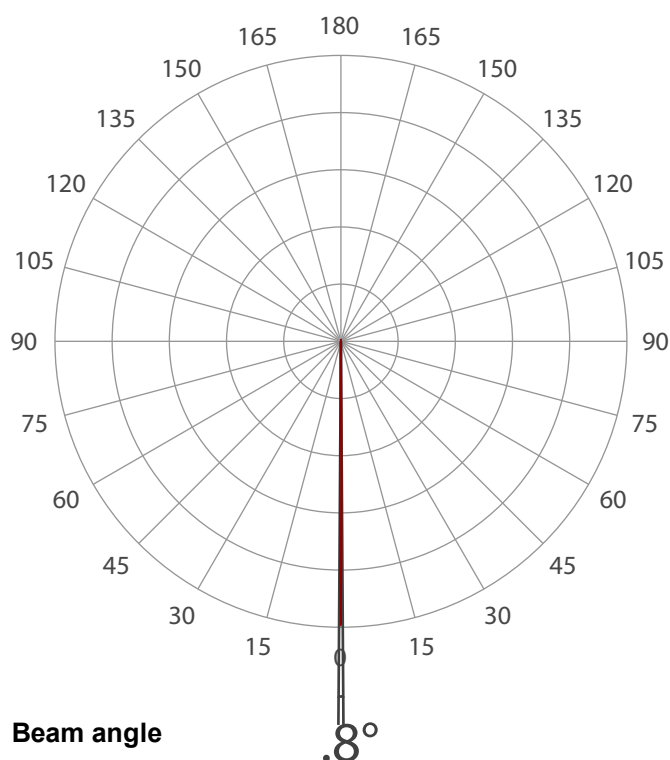
Tracking number: [n/a](#)

Product name:
Vizi Beam CMY

Item number:

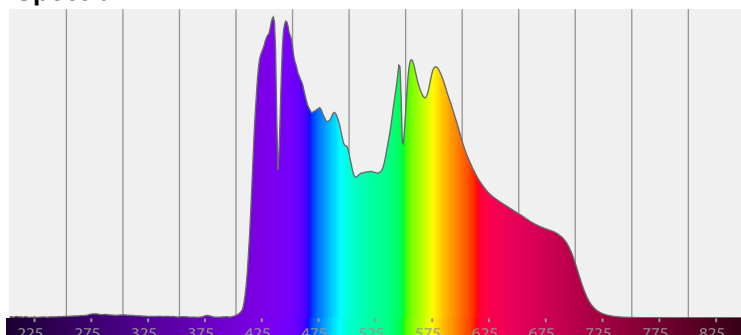
Date and time:
7/30/2024 11:58:44 AM

Description:

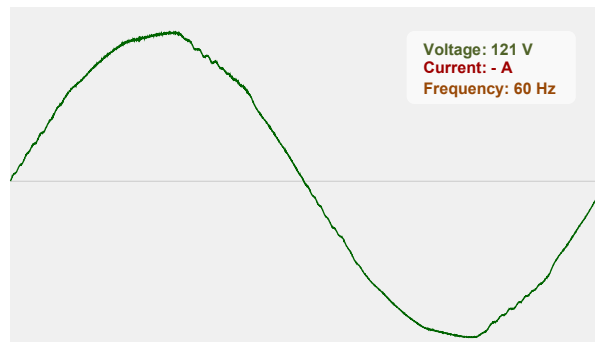


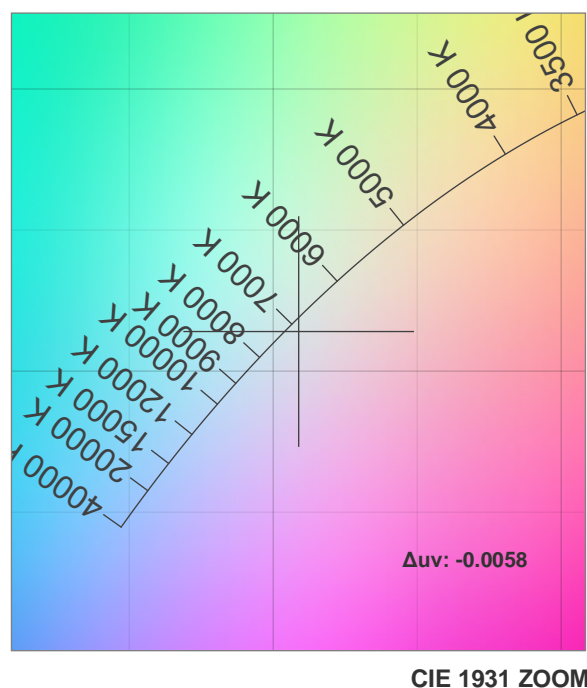
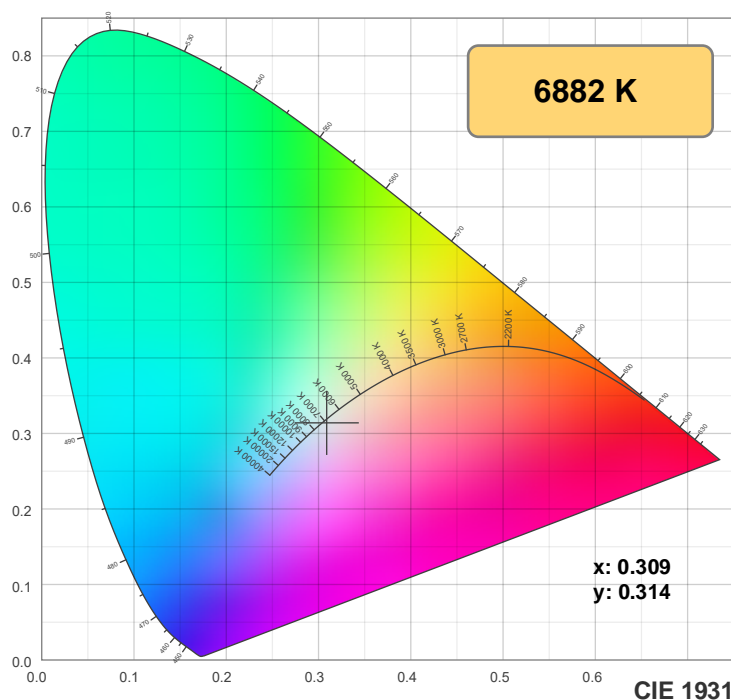
CIE 1931
x: 0.308
y: 0.314

Spectra



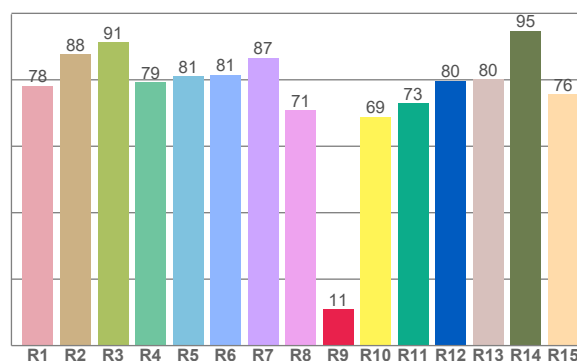
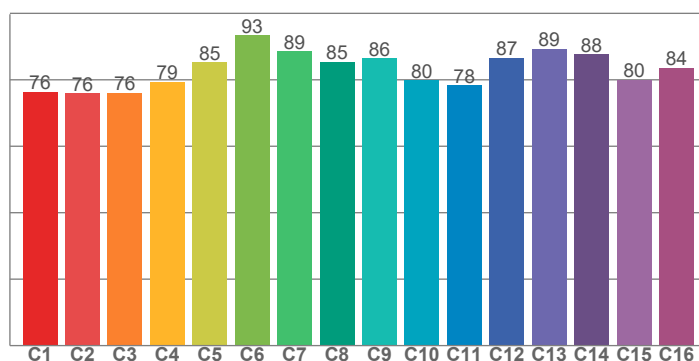
Power





TM-30: 83.2

CRI: 82.0 (R1-R8)



CRI R values, only R1-R8 are used to calculate final CRI value

R1	R2	R3	R4	R5	R6	R7	R8	R9	R10	R11	R12	R13	R14	R15
78.2	87.7	91.2	79.3	81.0	81.5	86.7	70.8	11.0	68.9	72.9	79.7	80.2	94.8	75.6

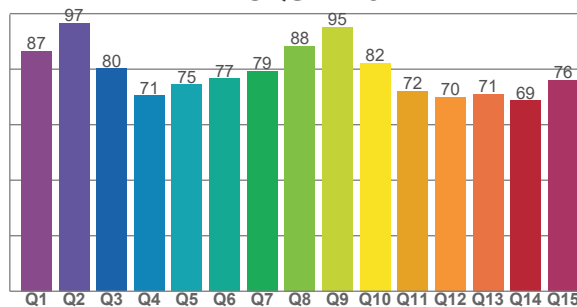
TM30 C values, 16 binned values out of total of 99 C values

C1	C2	C3	C4	C5	C6	C7	C8	C9	C10	C11	C12	C13	C14	C15	C16
76.4	75.9	76.1	79.4	85.2	93.3	88.6	85.4	86.5	79.8	78.3	86.7	89.3	87.6	79.9	83.6

CQS Q values

Q1	Q2	Q3	Q4	Q5	Q6	Q7	Q8	Q9	Q10	Q11	Q12	Q13	Q14	Q15
86.6	96.7	80.2	70.6	74.5	76.6	79.3	88.4	95.1	82.3	72.0	70.0	71.1	68.6	76.1

CQS: 77.5



Color parameters

Color temperature	Color rendering index	Red component	Color fidelity	Color gamut	Color quality scale	Color coordinate cie 1931	Color coordinate cie 1931	Color coordinate	Color coordinate	Color deviation from black body
CCT	CRI	CRI R9	TM30 Rf	TM30 Rg	CQS	x	y	u	v	Δuv
6882 K	82.0	11.0	83.2	94.3	77.5	0.309	0.314	0.201	0.306	-0.0058

TM-30 details

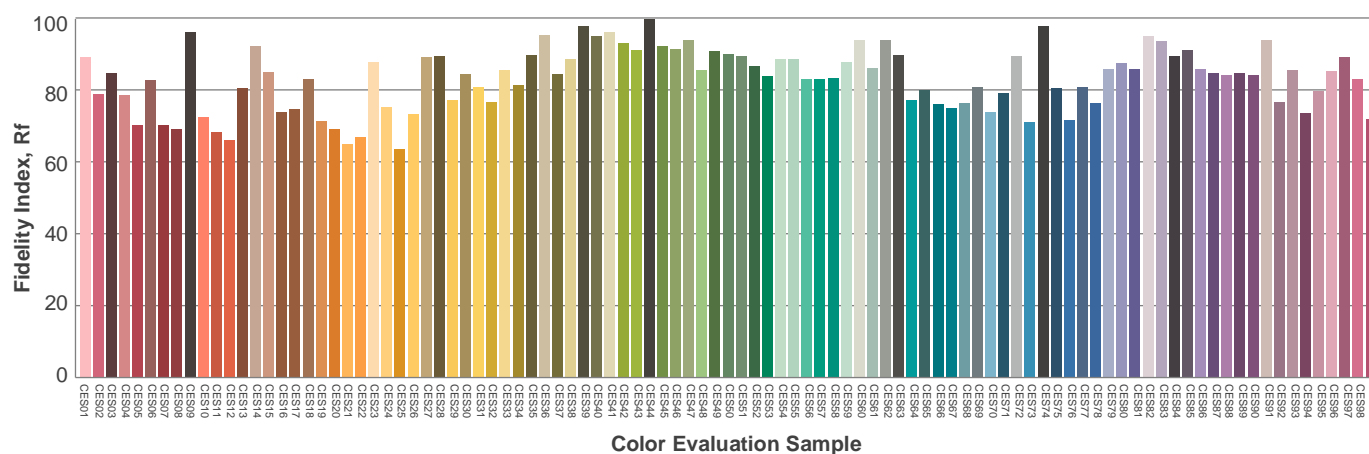
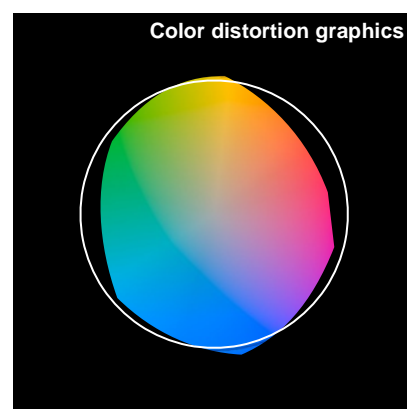
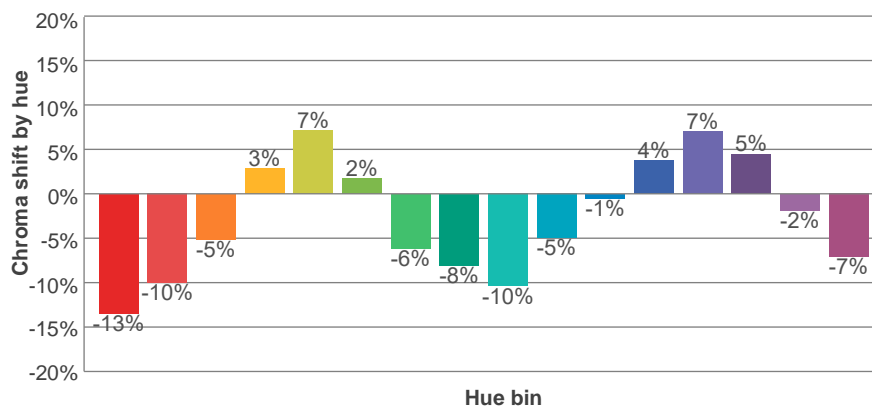
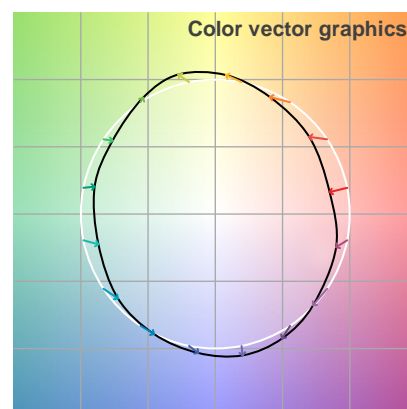
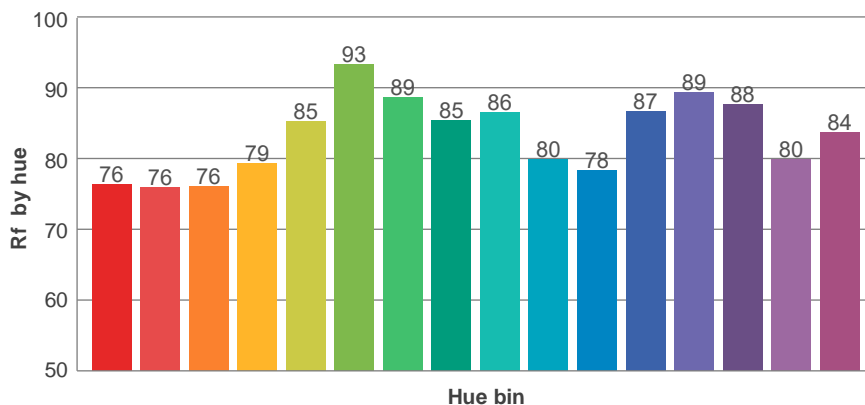
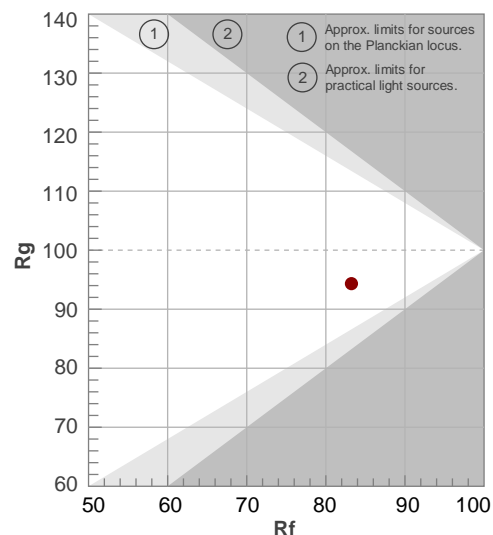
Rf 83.2

Fidelity index Rf

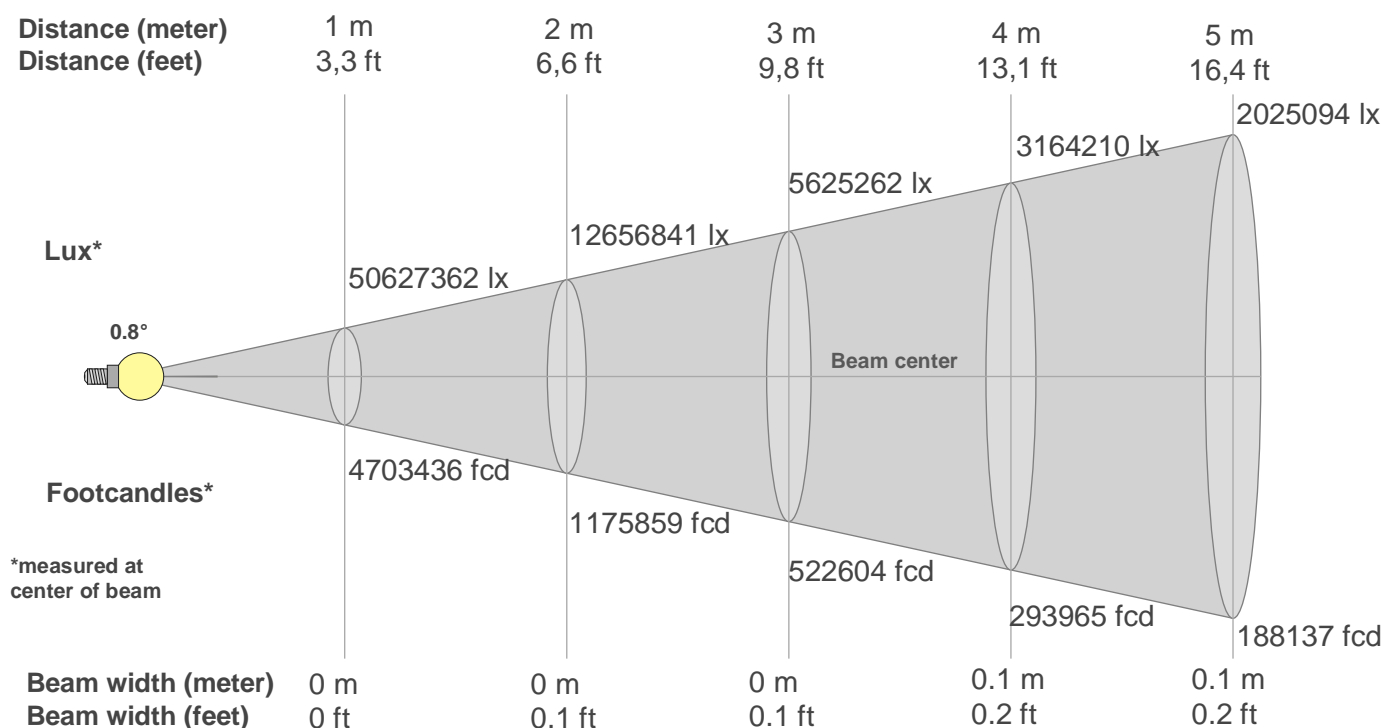
Rg 94.3

Gamut index Rg

Hue Bin	R _i	Shifts (%)	
		Chroma	Hue
1	76	-13%	-1%
2	76	-10%	9%
3	76	-5%	14%
4	79	3%	12%
5	85	7%	7%
6	93	2%	-3%
7	89	-6%	-3%
8	85	-8%	-2%
9	86	-10%	5%
10	80	-5%	12%
11	78	-1%	12%
12	87	4%	8%
13	89	7%	-1%
14	88	5%	-10%
15	80	-2%	-16%
16	84	-7%	-7%



Beam details



Beam intensities from 1-20m

1m	2m	3m	4m	5m	6m	7m	8m	9m	10m	11m	12m	13m	14m	15m	16m	17m	18m	19m	20m
3.3ft	6.6ft	9.8ft	13.1ft	16.4ft	19.7ft	23ft	26.2ft	29.5ft	32.8ft	36.1ft	39.4ft	42.7ft	45.9ft	49.2ft	52.5ft	55.8ft	59.1ft	62.3ft	65.6ft
50627362 lx	12656841 lx	5625262 lx	3164210 lx	2025094 lx	1406316 lx	1033211 lx	791053 lx	625029 lx	506274 lx	418408 lx	351579 lx	299570 lx	258303 lx	225010 lx	197763 lx	175181 lx	156257 lx	140242 lx	126568 lx
4703436 fcd	1175859 fcd	522604 fcd	293964 fcd	188137 fcd	130651 fcd	95988 fcd	73491 fcd	58067 fcd	47034 fcd	38871 fcd	32662 fcd	27831 fcd	23997 fcd	20904 fcd	18372 fcd	16274 fcd	14516 fcd	13028 fcd	11758 fcd

Intensities in 0° c-plane

0°	1°	2°	3°	4°	5°	6°	7°	8°	9°	10°	11°	12°	13°	14°	15°	16°	17°	18°	19°
51M	0M	0M	0M	0M	0M	0M	0M	0M	0M	0M	0M	0M	0M	0M	0M	0M	0M	0M	0M
100%	0%	0%	0%	0%	0%	0%	0%	0%	0%	0%	0%	0%	0%	0%	0%	0%	0%	0%	0%

Intensities in 90° c-plane

0°	1°	2°	3°	4°	5°	6°	7°	8°	9°	10°	11°	12°	13°	14°	15°	16°	17°	18°	19°
51M	0M	0M	0M	0M	0M	0M	0M	0M	0M	0M	0M	0M	0M	0M	0M	0M	0M	0M	0M
100%	0%	0%	0%	0%	0%	0%	0%	0%	0%	0%	0%	0%	0%	0%	0%	0%	0%	0%	0%

Intensities in 180° c-plane

0°	1°	2°	3°	4°	5°	6°	7°	8°	9°	10°	11°	12°	13°	14°	15°	16°	17°	18°	19°
51M	0M	0M	0M	0M	0M	0M	0M	0M	0M	0M	0M	0M	0M	0M	0M	0M	0M	0M	0M
100%	0%	0%	0%	0%	0%	0%	0%	0%	0%	0%	0%	0%	0%	0%	0%	0%	0%	0%	0%

Intensities in 270° c-plane

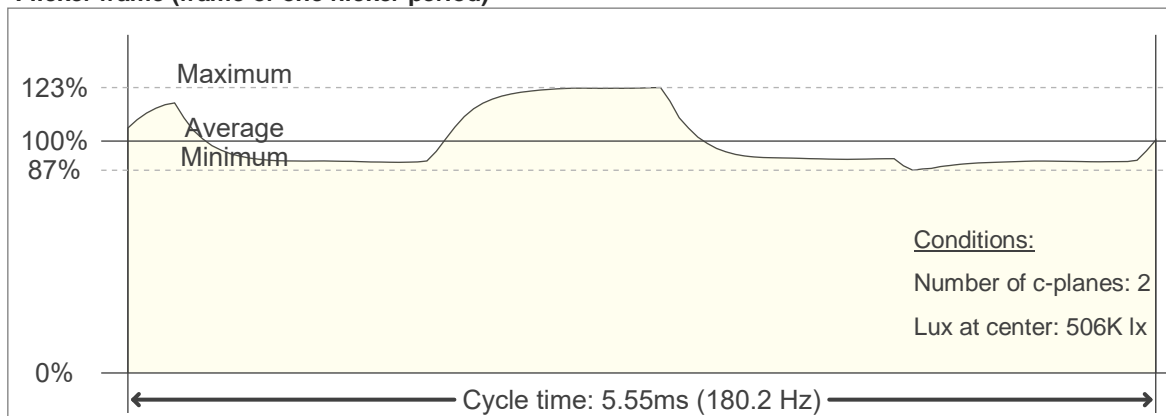
0°	1°	2°	3°	4°	5°	6°	7°	8°	9°	10°	11°	12°	13°	14°	15°	16°	17°	18°	19°
51M	0M	0M	0M	0M	0M	0M	0M	0M	0M	0M	0M	0M	0M	0M	0M	0M	0M	0M	0M
100%	0%	0%	0%	0%	0%	0%	0%	0%	0%	0%	0%	0%	0%	0%	0%	0%	0%	0%	0%

Beam angle 50%	Field angle 10%	Cutoff angle 2,5%	Intensity ratio in 120° cone	Intensity ratio in 90° cone
0.8°	1.6°	2°	100.0%	100.0%

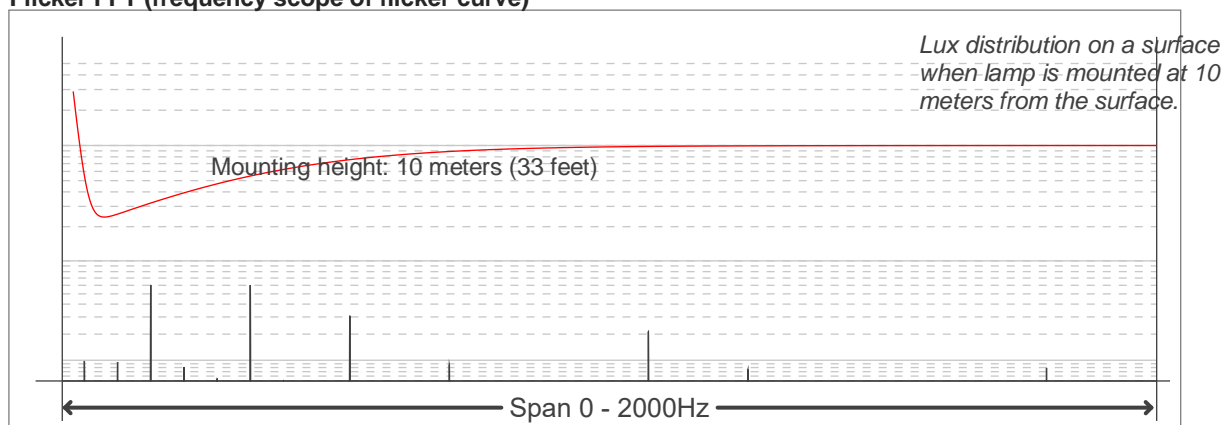
Flicker



Flicker frame (frame of one flicker period)



Flicker FFT (frequency scope of flicker curve)



Flicker results:

Flicker frequency:		180.18 Hz	
Flicker index:	0.05	JA8/10 40Hz	0.94 %
Flicker percentage:	21.92 %	JA8/10 90Hz	2.76 %
SVM: (Visual flicker)	0.37	JA8/10 200Hz	15.63 %
PstLM	0.69	JA8/10 400Hz	23.62 %
Mp	0.5	JA8/10 1000Hz	22.82 %

Flicker conditions:

Sample rate:	20000 samples/second
--------------	----------------------